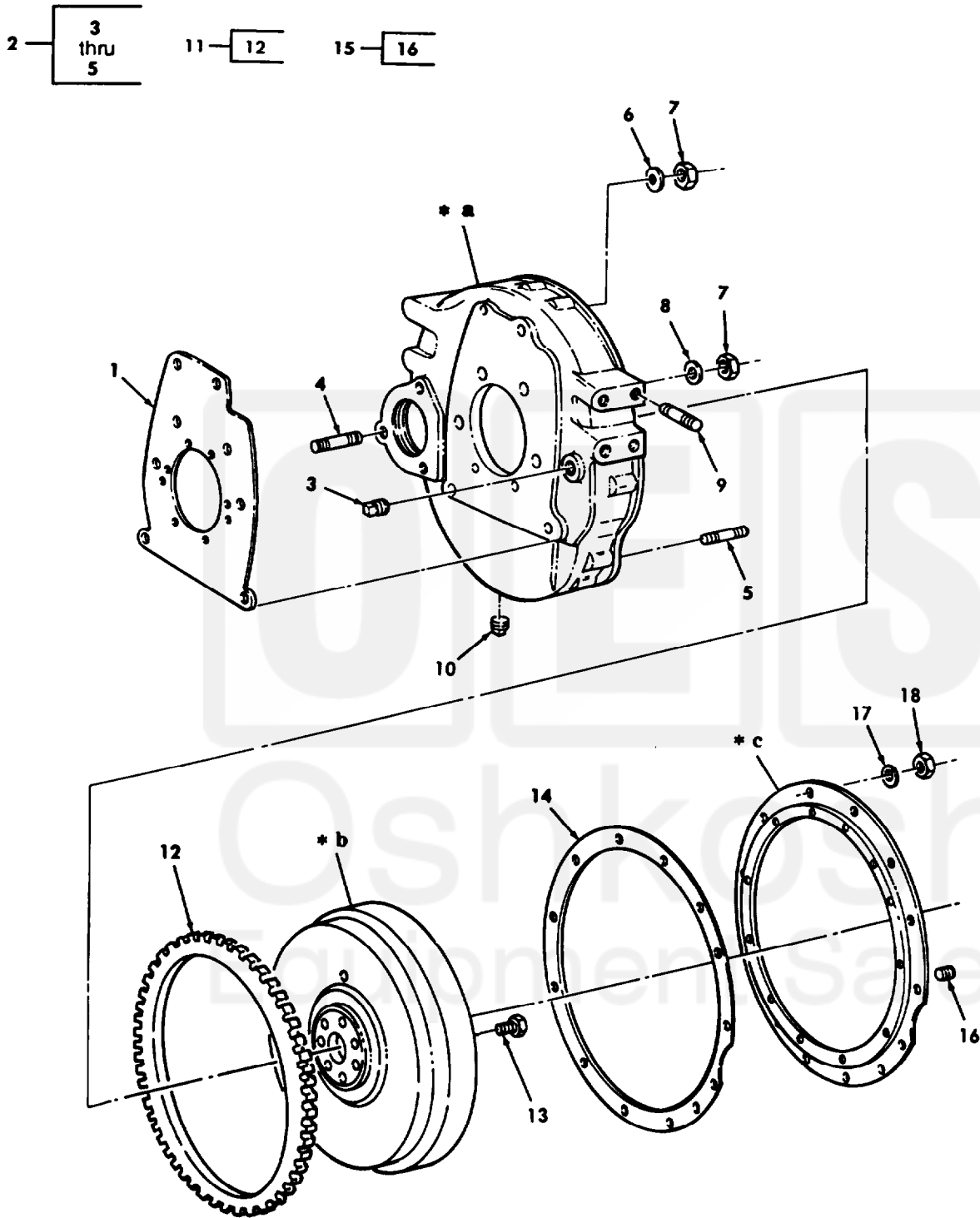


Section II.

TM 9-2815-210-34P



- * a PART OF ITEM 2
- * b PART OF ITEM 11
- * c PART OF ITEM 15

Figure 6. Flywheel, Flywheel Housing, Transmission Adapter, and Related Parts (LDT465-1D).

Current part is item (14) on diagram. Available at www.oshkoshequipment.com

| SECTION II | | IM9-2815-210-34P | | | | |
|------------|----------|------------------|-------|-------------|----------------------------------------------------------------------------------------------------------------------|-----|
| (1) | (2) | (3) | (4) | (5) | (6) | (7) |
| ITEM NO | SMR CODE | NSN | CAGEC | PART NUMBER | DESCRIPTION AND USABLE ON CODES (UOC) | QTY |
| 14 | PAFZZ | 5330008633165 | 19207 | 10899062 | 503,506,510,511,516 GASKET PART OF KIT P/N 57K1319 UOC:B95,B96,437,438,445,446,455,456, 503,506,510,511,516 | 1 |
| 15 | PAFZZ | 2815001793382 | 19207 | 10912491 | ADAPTER,TRANSMISSIO UOC:B95,B96,437,438,445,446,455,456, 503,506,510,511,516 | 1 |
| 16 | PAFZZ | 5325002904518 | 96906 | MS122123 | .INSERT,SCREW THREAD UOC:B95,896,437,438,445,446,455,456, 503,506,510,511,516 | 13 |
| 17 | PAFZZ | 5310009594675 | 96906 | MS35340-46 | WASHER, LOCK UOC:B95,896,437,438,445,446,455,456, 503,506,510,511,516 | 13 |
| 18 | PAFZZ | 5310007320558 | 96906 | MS51967-8 | NUT, PLAIN, HEXAGON UOC:B95,B96,437,438,445,446,455,456, 503,506,510,511,516 | 13 |

END OF FIGURE



Current part is item (14) on diagram. Available at www.oshkoshequipment.com